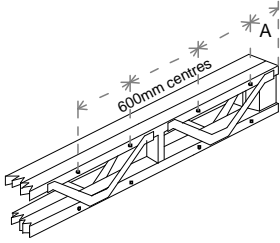


Eco Joist Details



2 PLY JOIST DETAIL

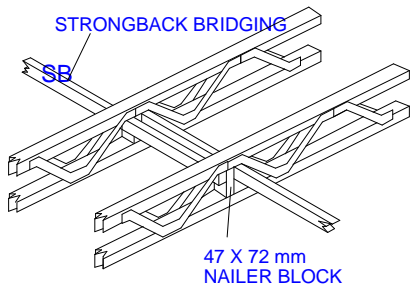
SDS SCREWS @ 600 C/C ALONG CENTRE LINE OF BOTH CHORDS.

HEAD OF SCREW SHOULD BE ON SAME SIDE OF JOIST AS HANGER.

MINIMUM END DISTANCE OF 75mm SHOULD BE APPLIED TO BOTH CHORDS.

FLOORING SHOULD BE GLUED TO BOTH TOP CHORDS OF 2 PLY JOIST.

DIMENSIONS A, B & C SHOULD NOT EXCEED 150mm.



STRONGBACK BRIDGING

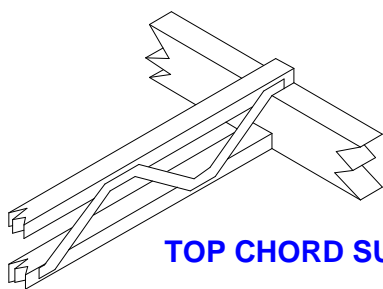
SB

47 X 72 mm
NAILER BLOCK

PREFERRED POSITION OF STRONGBACK BRIDGING TIGHT TO UNDERSIDE OF TOP CHORD.

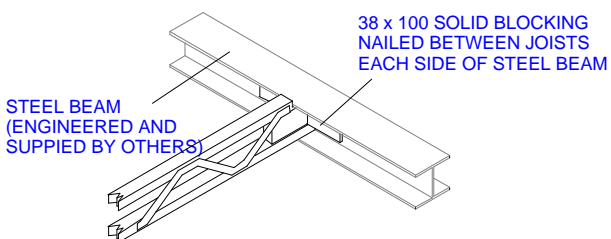
ATTACH STRONGBACK BRIDGING TO NAILER (3 NAILS).

STRONGBACK BRIDGING DETAIL



TOP CHORD SUPPORT

97x47 BLOCKING NAILED ON TOP OF TRIMMER BEAM



STEEL BEAM
(ENGINEERED AND
SUPPLIED BY OTHERS)

38 x 100 SOLID BLOCKING
NAILED BETWEEN JOISTS
EACH SIDE OF STEEL BEAM

NOTCH INTO STEEL DETAIL